



GlosVAIN
Gloucestershire Vale
Against Incineration



A key stepping stone
to sustainability

PRESENTATION

to Parish & Town Councils



WHAT IS GlosVAIN?

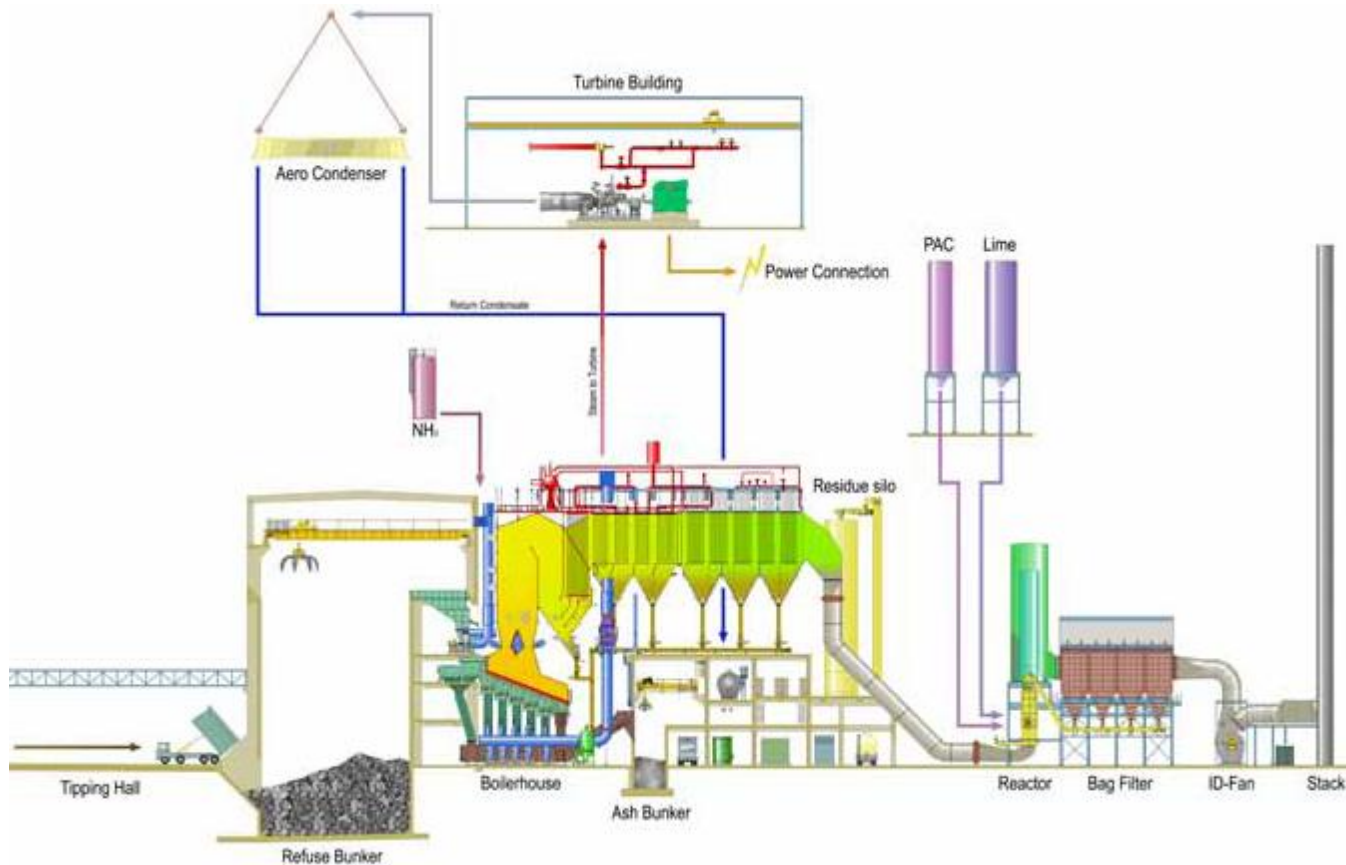
- An alliance of town and parish councils, individuals & organisations in the Severn Vale
- Non party-political
- Working in partnership with other environmental organisations (e.g GFOE, SWARD, GLOSAIN - www.GlosAIN.org.uk)
- Aims: to oppose waste incineration and support more acceptable methods to minimise waste in Gloucestershire

WHAT IS AN INCINERATOR?

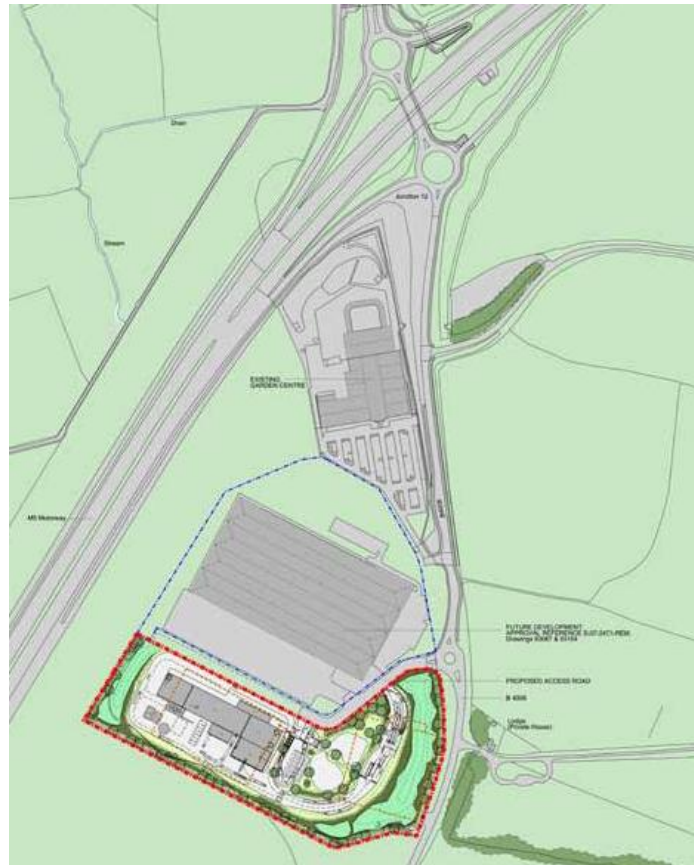


A device for converting waste into heat, gas and ash

HOW DOES IS WORK?



WHERE WILL IT BE?



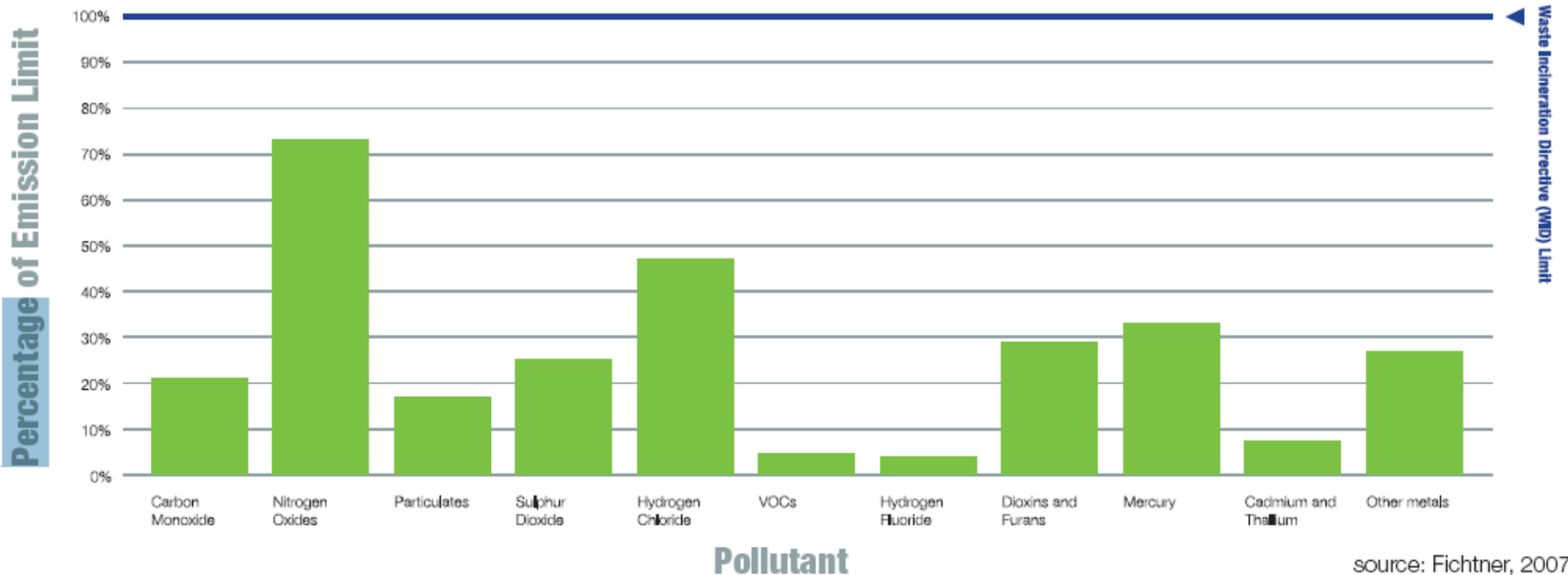
WHAT WILL IT LOOK LIKE?



‘Represent a new ‘Gateway’ to Gloucestershire, blending form and modernity with sustainable innovative productivity’

AVERAGE EMISSIONS – SO 50% EMIT MORE

Average emissions performance of UK Energy-from-Waste Plants



SOME FACTS ABOUT PROPOSALS FOR JAVELIN PARK

- Building will be 45metres high (15 storeys) and stack 85 metres high
- Incinerator will have an efficiency of only around 24% because heat cannot be used.
- One waste transfer lorry every half hour – many more at peak times
- Lorries having to travel up to 80 miles roundtrip
- Polluted plume reach depends on weather – will be at least 14 miles

WHY WASTE INCINERATORS ARE THE WORST OPTION

- Only technology with evidence that it adds to health risks
- Only technology to create toxic ash
- Only technology to run 24/7 and compete with sustainable methods such as recycling
- Only technology which has such huge impact on landscape
- Only technology with such high CO₂

..AND MORE

- The most expensive option (discounting tax)
- Regulation and tax changes will affect business case
- R&D possibilities & jobs lost (only 30 jobs)—better technologies on the way and green industries using recyclates
- Not modular – once it's built, that's it
- Inflexible 25-year + commitment
- The Government says we don't need it!

ENERGY COMPARISON: RECYCLING VERSUS INCINERATION

Material	Energy savings recycling GJ/tonne	Energy output from incineration GJ/tonne	Energy savings recycling v incineration
Newsprint	6.33	2.62	2.4
Fine Paper	15.87	2.23	7.1
Cardboard	8.56	2.31	3.7
Other paper	9.49	2.25	4.2
HDPE	64.27	6.30	10.2
PET	85.16	3.22	26.4
Other plastic	52.09	4.76	10.9

Source: ICF Consulting 2005

COST COMPARISON (minus tax)

System	Tonnes Capacity Annually	Capital £m	£ per process tonne
Windrow composting	40,000	£1-2m	£50-80
Mechanical Separation	100,000	£10m	£100
Anaerobic Digestion	50,000	£10m	£200
Small scale incinerator	50-60,000	£25m	£500
Large scale incinerator	500,000	£180m	£360
Medium scale incinerator	120,000	£65-80m	£667
Small scale gasifier/syngas	40-50,000	£14m	£280

HEALTH EVIDENCE

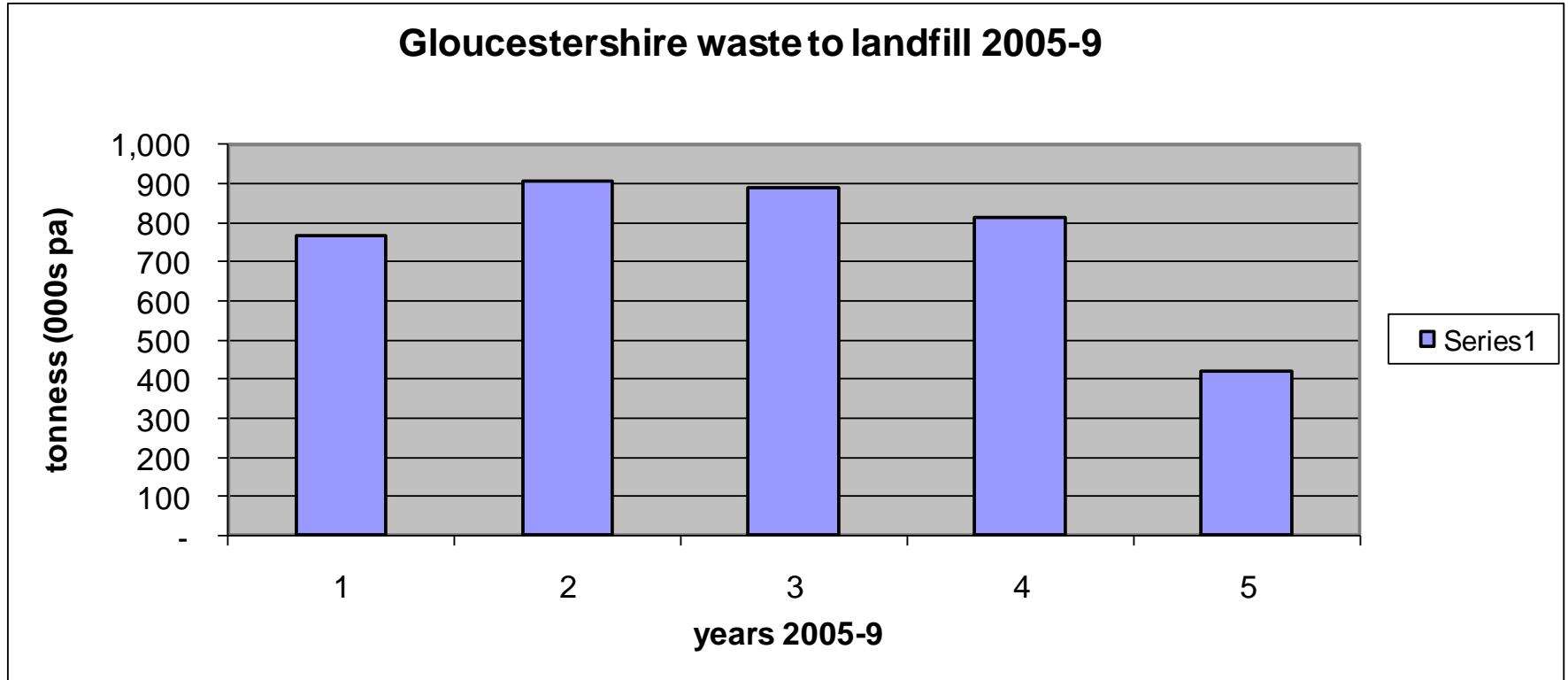
Studies by Michael Ryan of UK Health Research show how high incidences of infant deaths coincide with the close proximity to populations of power stations and incinerators. This evidence was used by Capel PC to win their case against an incinerator.

Infant Deaths per 1,000 live births

	DOWNWIND	UPWIND
Kirklees	9.4	3.5
Coventry	8.2	3.2
Edmonton	10.5	2.5

WASTE FIGURES

Waste is ***already reducing!*** From 908,000 tonnes to landfill in 2006 to 419,000 tonnes in 2009

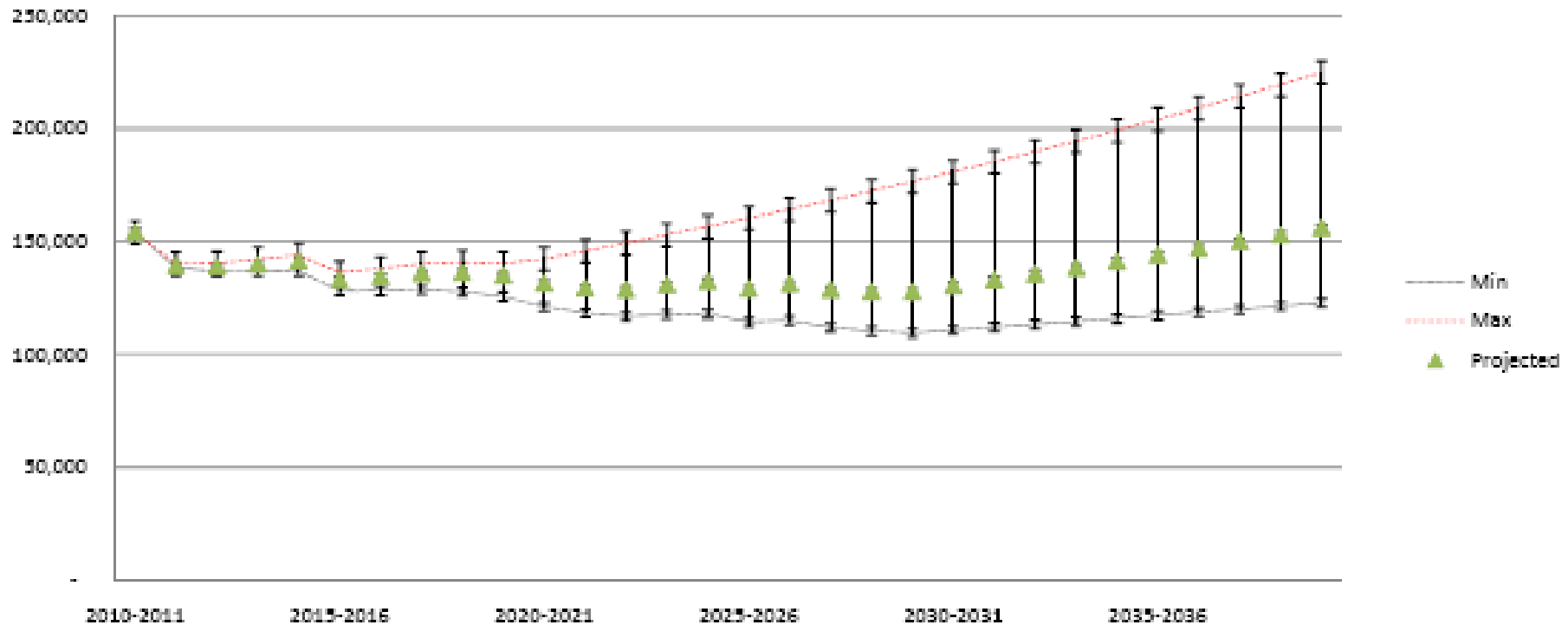


Source: www.environment-agency.gov.uk

WASTE FIGURES

But GCC predict that waste will rise !!!

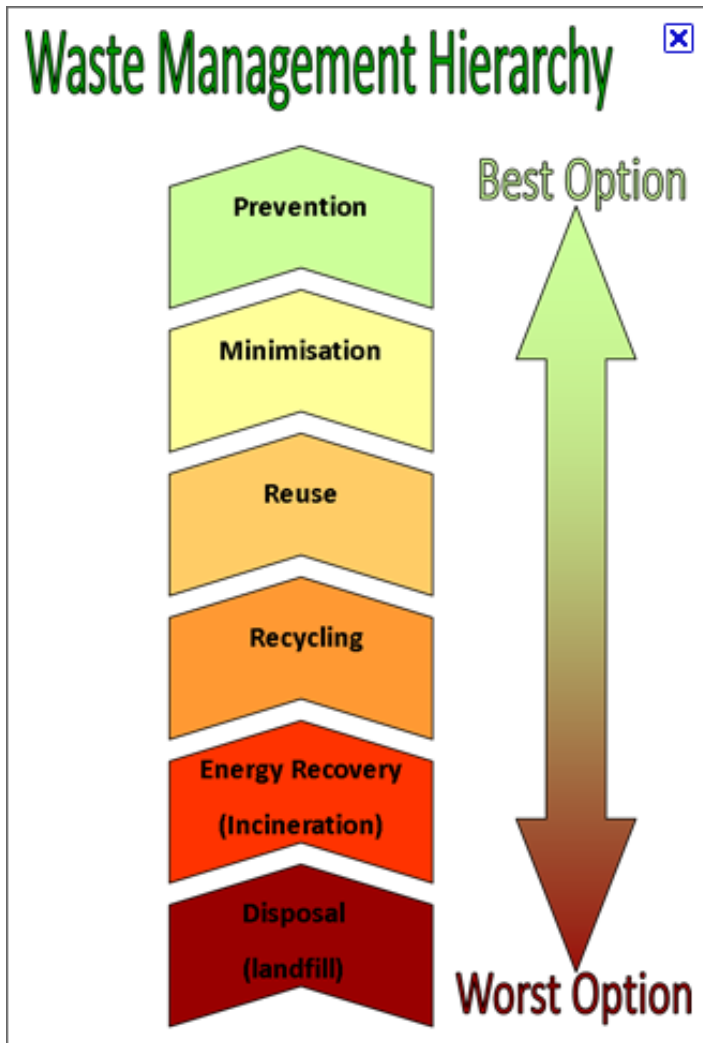
Projected Residual MSW Tonnages from 2010/11 to 2039/40



“Predicting waste is an art rather than a science”

Source: Jo Walker, Director Environment, GCC

SO WHAT SHOULD WE DO WITH OUR WASTE INSTEAD?



- Prevent
- Reduce
- Reuse
- Recycle
- MBT/AD
- Landfill

COUNTY COUNCIL ACTIONS SO FAR

- Landfill unsustainable - Decided to bid for PFI funding
- Bought Javelin Park and used it and incineration for reference bid for funding
- No proper public consultation
- Started procurement process using EU rules
- Oct 2010 PFI funding withdrawn
- March 2011 decided to go ahead anyway and short listed to 2 incinerator proposals – consultation by bidders 16th-19th July
- Waste Core Strategy being developed alongside procurement process

COUNTY COUNCIL NEXT STEPS

Sept- Dec 2011	Examination in Public of Waste Core Strategy
Nov 2011	Contract awarded to successful bidder
Dec 2011 or early 2012	Bidder applies for Planning Permission
2013	Construction could start
2015	Incinerator could be operational

WHAT GLOSVAIN & PARISH COUNCILS CAN DO

- The incinerator is not agreed yet
- We know what we're fighting
- Planning is critical
- Pack of cards
- Don't give up!
- Other Parish Councils and campaign groups have won e.g Capel PC in Surrey & PAIN in Sherwood Forest


**God recycles,
The devil burns**



Stop Incineration